



Ocean inspired carpet collection

A microcosm of aesthetic suggestions, excellent materials, and technical quality characterizes the new carpet collection designed for luxury yachting.

After extensive experience in major shipyards, where custom-made products were crafted with precious and artisanal yarns, Luxury Carpet Studio presents Ocean, a tailoring collection capable of providing excellent solutions for the desires and needs of the most demanding designers and shipowners.

Designer Elisabetta Santoro has conceived a new series inspired by the ocean and its inhabitants, drawing from the luminescence of jellyfish, the reflections of water, the iridescence of mother-of-pearl, the striations of shells, and the sinuosity of sand, combining a profound aesthetic and stylistic sense.

What unites all the models in the collection are the shades of color; chromatic transitions occur gradually and progressively thanks to different tones. Color, expressed in a wide range of shades, is decidedly the protagonist of the entire collection, both from an aesthetic and technical standpoint.

The collection's images seek to evoke a mood and provide a sensorial and immersive experience – touching the sea waves, feeling the softness of the sand, and being embraced by light and color.

The marine world  
*becomes*  
a work of art.

## Collection

In the vision of Luxury Carpet Studio, attention to every detail is a rule because it can make a difference. Design, materials, decorative patterns, craftsmanship, textures, durability: the timeless elegance of the carpets contributes to enhancing the beauty of large yachts.

Each yacht is a challenge to be won for the company, a project to make unique, distinctive, and iconic.

A manifesto of "made with art and tailor-made" in line with the Italian tradition of Beauty.

### Sea



### Shell



### Mother of Pearl



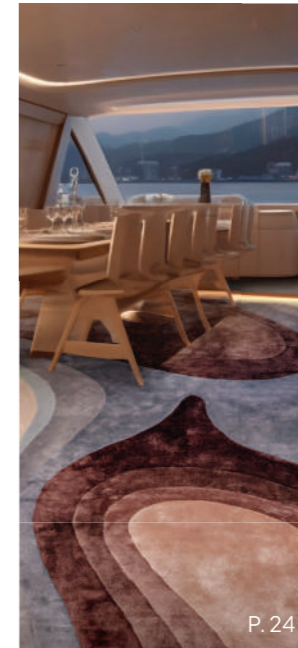
### Jellyfish



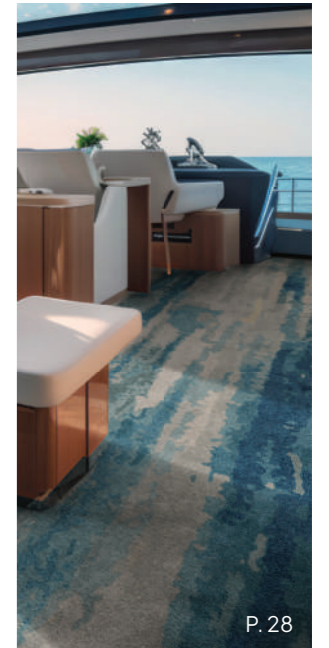
### Waves



### Atollo



### Stripes





# Sea

*The vibrant essence of the coastline.*

Sea recreates a beach where the waves of the sea break, with the aim of providing a sensory experience that makes the person walking on the carpet feel as if their feet were immersed in the water or as if they could perceive the softness of the sand.



Handmade quality  
Shiny Bamboo  
4 x 5 meters  
Totally customizable





# Shell

*The harmony of marine striations.*

Shell captures the intricate and enchanting pattern of the subtle and complex striations of shells. Neutral tones and refined texture blend harmoniously, creating an elegant and discreet palette. It's like immersing oneself in an oasis of tranquility, where natural beauty merges with timeless elegance.



Handmade quality  
Shiny Bamboo  
4 x 5 meters  
Totally customizable





# Mother of Pearl

*Ethereal reflections of purity.*

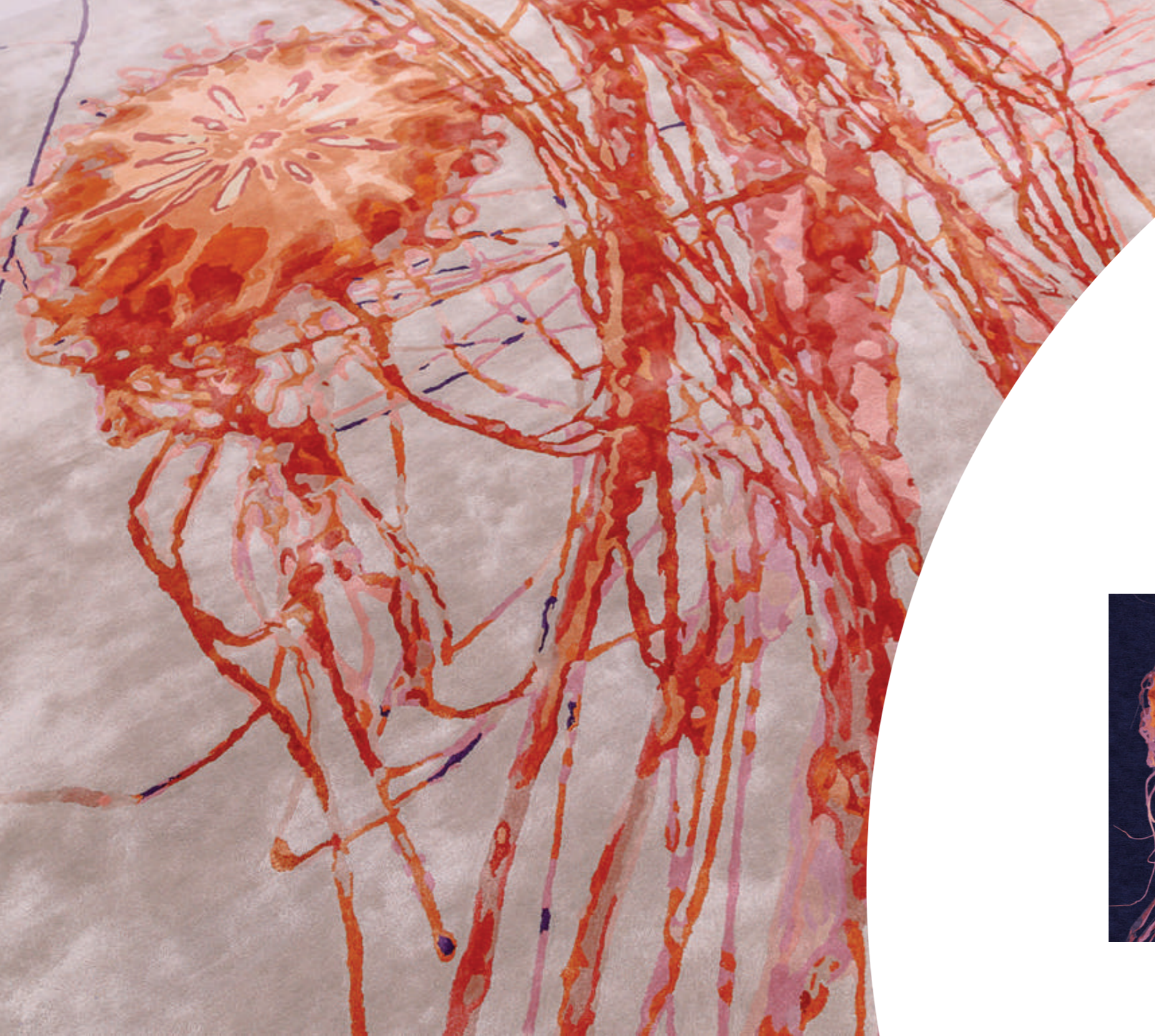
Mother of Pearl aims to evoke a mood and provide a sensory experience, as if lying on the carpet makes one feel enveloped by the light and reflections of the iridescence of mother-of-pearl.



Handmade quality  
Shiny Bamboo  
4 x 5 meters  
Totally customizable



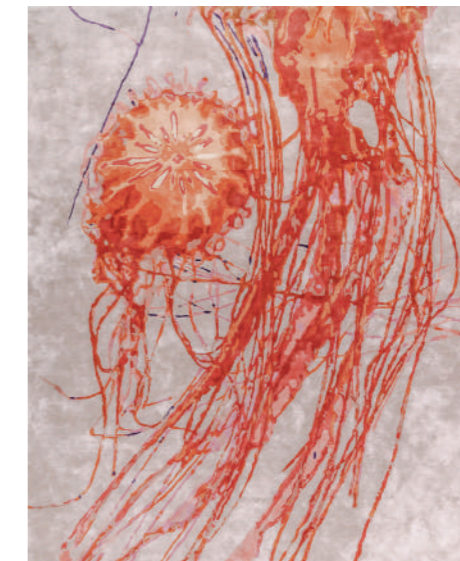
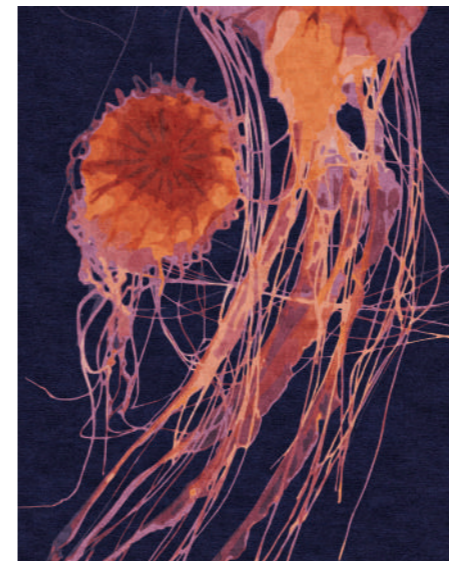




# Jellyfish

*The sinuous movement of tentacles.*

Jellyfish represents the intriguing beauty of jellyfish, with their ethereal grace and sinuous movement. The intricate pattern of tentacles intertwining like an underwater ballet becomes an embracing texture that conveys the sensation of floating in the ocean.



Handmade quality  
Shiny Bamboo  
4 x 5 meters  
Totally customizable





# Waves

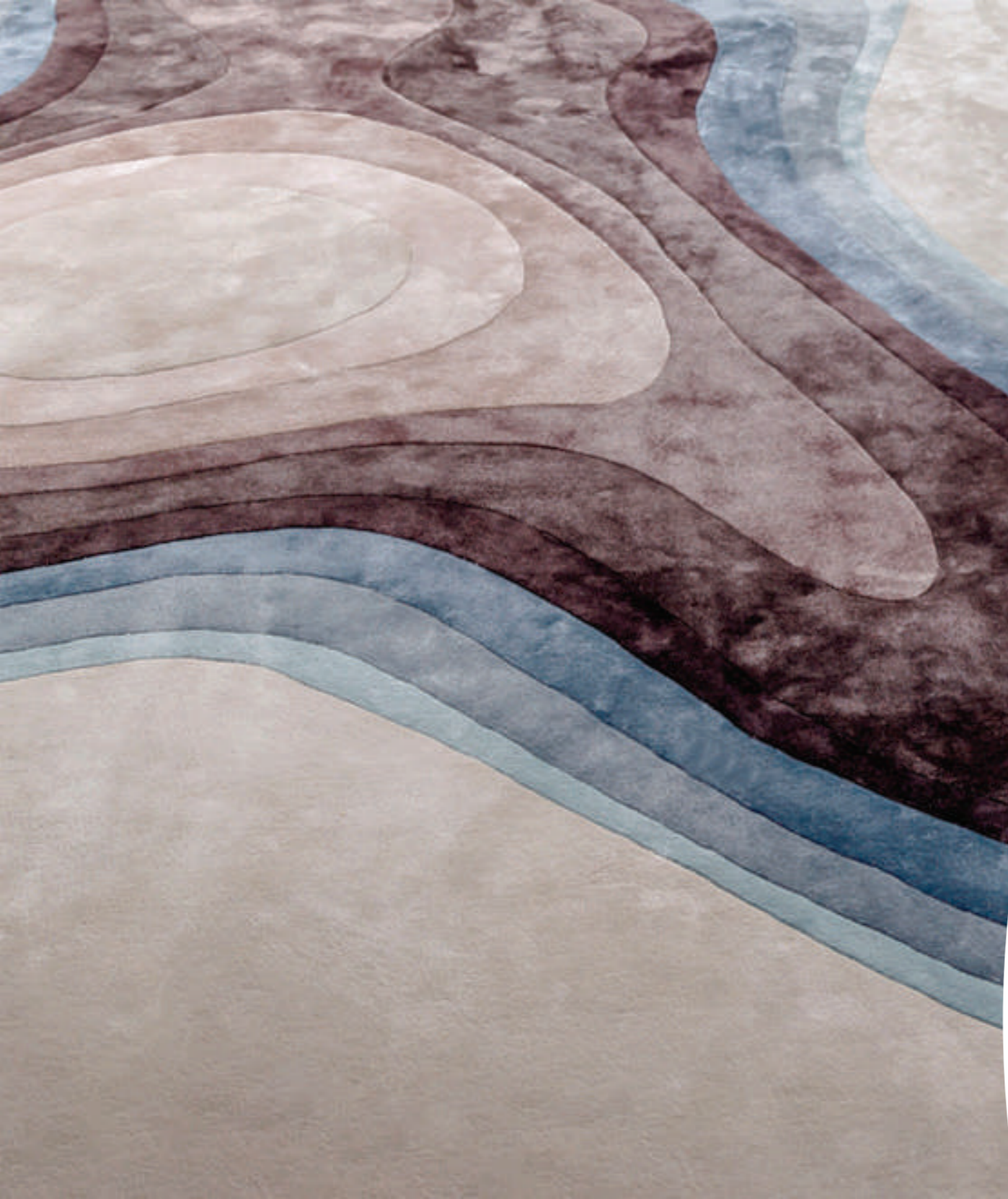
## *Tangible waves.*

Waves draws inspiration from macroscopic images of ocean waves. The forms have been developed three-dimensionally through a highly skilled artisanal technique: embossing. This handcrafted process imparts a tangible sensation, transforming the carpet into a palpable representation of the ocean.



Handmade quality  
Shiny Bamboo  
4 x 5 meters  
Totally customizable

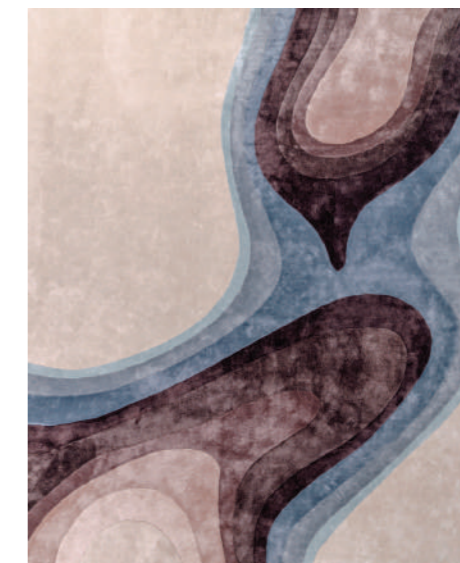




# Atollo

## *Tactile dunes.*

Atollo is inspired by sand dunes. These forms have been transformed into a three-dimensional landscape with a pronounced material character, thanks to the embossing technique; a particular method of handcrafting that requires a high degree of skill and craftsmanship.



Handmade quality  
Shiny Bamboo  
4 x 5 meters  
Totally customizable





# Stripes

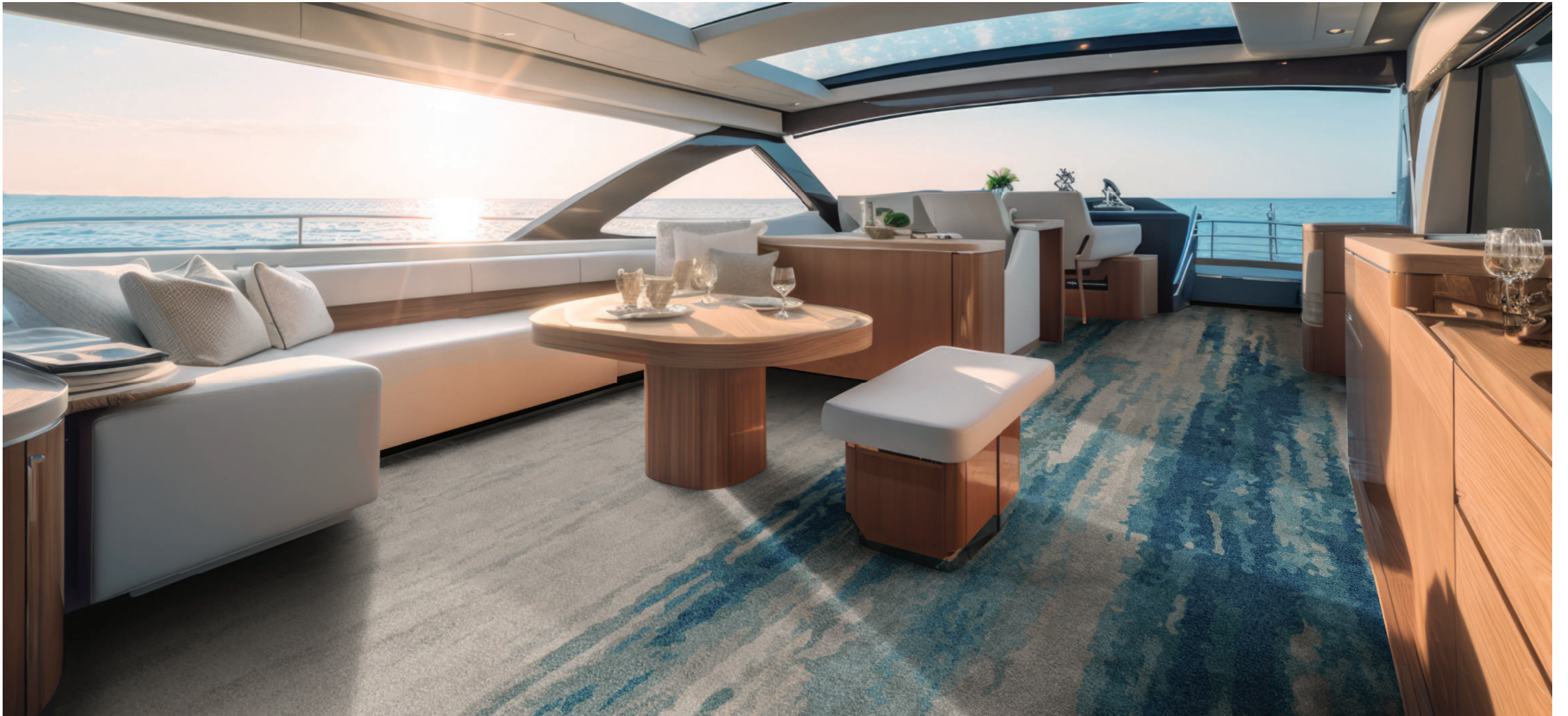
## *The abstract way.*

In Stripes you can see the marine world through another point of view. The games of light, the foamy waves are revised in a pictorial and abstract way thanks to the alternation of shades and streaks.



Handmade quality  
Shiny Bamboo  
4 x 5 meters  
Totally customizable





*Ocean collection*

Sea



P. 4

Shell



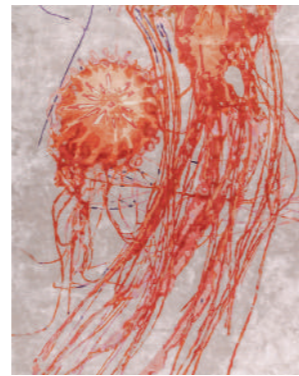
P. 8

Mother of Pearl



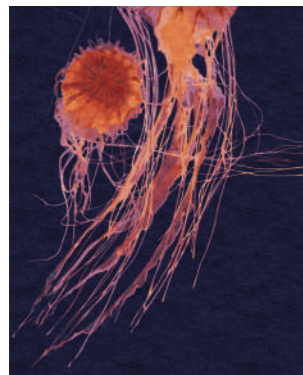
P. 12

Jellyfish Light



P. 16

Jellyfish Dark



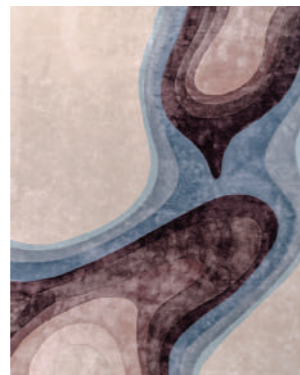
P. 16

Waves



P. 20

Atollo



P. 24

Stripes



P. 28

At Luxury Carpet Studio every rug is timeless, unique masterpiece aimed to enrich any kind of luxury setting, indoor and outdoor.

Luxury Carpet Studio works in compliance with the strictest quality standards and national and international regulations on environmental safety and use.

**Luxury Carpet Studio**

studio@luxurycarpet.it

T. +39 0362 1971796

**luxurycarpet.it**



LUXURY  
CARPET  
STUDIO